



## What others say...

*The trainers are tremendous and provided a very comprehensive overview together with interesting 'real-life' examples*

*Very useful training for those looking to understand how to better collaborate with patients during the drug development process!*

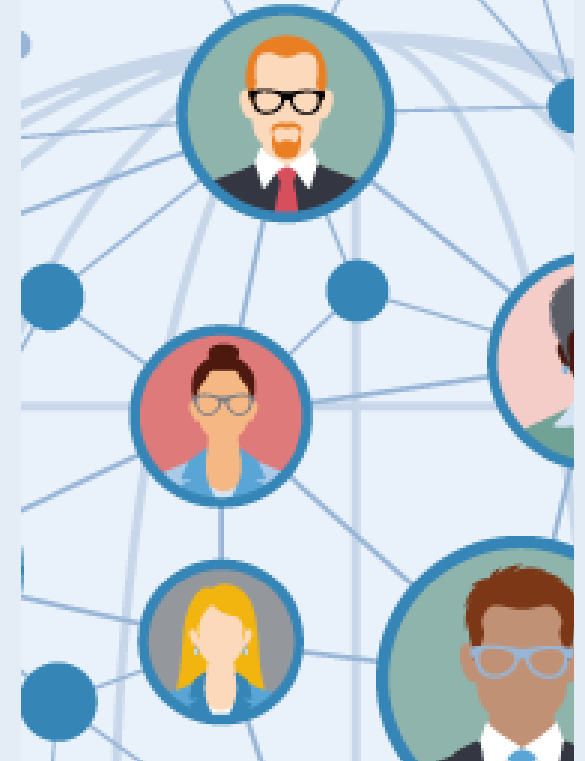


*Co-created and co-delivered by patients and experts from academia and industry*

*Problem-based learning*

*Real-life examples*

**EUPATI4  
PROFESSIONALS**



**Patient  
Engagement  
Trainings**



**CONTACT US**  
info@eupati.eu

# WHO WE TRAIN



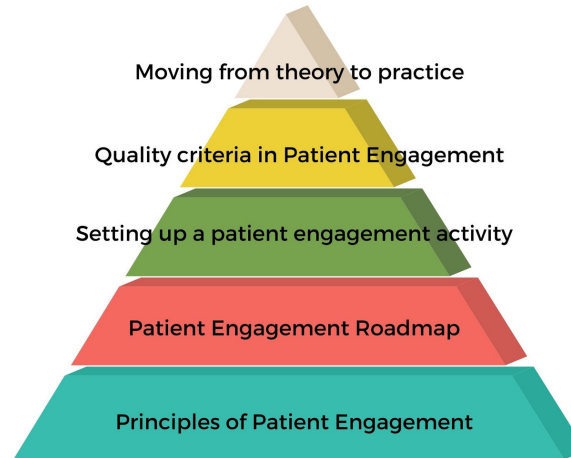
LEARN FROM PATIENT EXPERTS WITH DECADES OF COLLABORATION EXPERIENCE

- ★ Academia and Pharmaceutical Professionals
- ★ Professionals in Medicines R&D activities involving patients and patient representatives
- ★ Professionals interested in advancing their career in patient engagement

# OUR TRAININGS

## EUPATI FUNDAMENTALS

Provide Patient Engagement Training for Academia and Pharmaceutical professionals



## EUPATI ESSENTIALS

Develops on the concepts introduced in the Fundamentals training, and provides detailed knowledge about different aspects of patient engagement in R&D

## IN - HOUSE TRAININGS

Provides tailored in-house trainings about patient engagement for academia and the pharmaceutical industry

# WHY WE TRAIN



SHAPED BY THE UNIQUE EUPATI PUBLIC-PRIVATE PARTNERSHIP PERSPECTIVE

- ★ To ensure the acceleration of effective patient engagement
- ★ To address the gap preventing effective patient engagement
- ★ To help develop a strong foundation for a successful partnership with patients and patient organisations